

# SMETA SCIENCE OLYMPIAD

SAMPLE PAPER  
GRADE 3-4



**Q1. Laira planted two seeds in two pots. She placed one pot in sunlight and the other in a dark cupboard. After a week, she saw that only the plant in sunlight had grown. Why did the other plant not grow?**

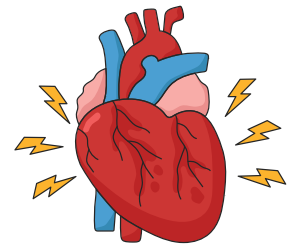
- A) It was sleeping
- B) It needed sunlight to make food
- C) It was scared of the dark
- D) It forgot how to grow

Answer: B) It needed sunlight to make food

**Q2. If your heart could talk, how would it tell its main job?**

- A) "I help you digest food!"
- B) "I pump blood to your whole body!"
- C) "I help you breathe!"
- D) "I control your thoughts!"

Answer: B) "I pump blood to your whole body!"



**Q3. Why do humans need to breathe air?**

- A) To fill up their stomach
- B) To provide oxygen to their body
- C) To make their voice louder
- D) To help them run faster

Answer: B) To provide oxygen to their body

**Q4. Not all bacteria are bad! Some bacteria live inside your stomach and help you digest food. What can we learn from this?**

- A) All bacteria are harmful
- B) Some bacteria help the human body
- C) Bacteria only live outside the body
- D) People should never eat food

Answer: B) Some bacteria help the human body

**Q5. A big forest fire destroyed many trees. What will happen to the animals that lived there?**

- A) They will move to another place
- B) They will turn into plants
- C) They will start eating rocks
- D) They will stay in the same place forever

Answer: A) They will move to another place



**Q6. A tiny egg was floating in a pond. After a few days, a small tadpole came out of it. It swam in the water and later grew legs. Finally, it became a frog. What is this process called?**

- A) Hibernation
- B) Migration
- C) Life cycle
- D) Digestion

Answer: C) Life cycle



**Q7. Which of these is a way we use solar energy in daily life?**

- A) Using a candle to light a room
- B) Charging a solar-powered calculator
- C) Burning wood for fire
- D) Eating food to gain energy

Answer: B) Charging a solar-powered calculator

**Q8. Alize left a metal spoon in a hot cup of tea. After a while, she touched the spoon and it was hot. What happened?**

- A) The spoon made the tea colder
- B) The heat from the tea moved to the spoon
- C) The spoon created its own heat
- D) The spoon turned into a candle

Answer: B) The heat from the tea moved to the spoon

**Q9. Benit left an ice cube outside on a hot day. After some time, it turned into water. What caused this change?**

- A) The ice grew bigger
- B) The sun's heat melted the ice
- C) The ice turned into air
- D) The ice decided to change

Answer: B) The sun's heat melted the ice



**Q10. Which of these is an example of a gas?**

- A) A table
- B) A glass of milk
- C) The air in a balloon
- D) A piece of ice

Answer: C) The air in a balloon

**Q11. Rosa asked her teacher, "Where does drinking water come from?" What is the best answer?**

- A) It comes from the ocean and is salty
- B) It comes from lakes, rivers, and underground sources
- C) It is made in factories
- D) It magically appears in bottles

Answer: B) It comes from lakes, rivers, and underground sources

**Q12. Which object in the Solar System gives us light and heat?**

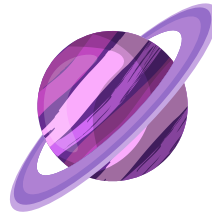
- A) The Moon
- B) The Sun
- C) The Earth
- D) Mars

Answer: B) The Sun

**Q13. Which planet is closest to the Sun?**

- A) Earth
- B) Venus
- C) Mercury
- D) Saturn

Answer: C) Mercury



**Q14. What causes day and night on Earth?**

- A) The movement of the Sun
- B) The Earth's rotation
- C) The Moon blocking the Sun
- D) The weather changing

Answer: B) The Earth's rotation

**Q15. John woke up and saw puddles on the road, children wearing raincoats, and people using umbrellas.**

**What was the weather like?**

- A) It was windy
- B) It was rainy
- C) It was sunny
- D) It was snowing

Answer: B) It was rainy

**Q16. What is the process of reusing materials instead of throwing them away?**

- A) Wasting
- B) Recycling
- C) Burning
- D) Digging

Answer: B) Recycling

**Q17. What should we do to help conserve water?**

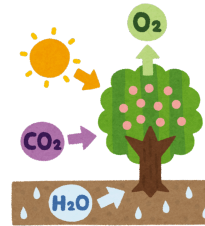
- A) Leave taps running
- B) Use water wisely and turn off taps when not in use
- C) Spill water on the ground
- D) Take long showers

Answer: B) Use water wisely and turn off taps when not in use

**Q18. Which gas do plants release during photosynthesis?**

- A) Oxygen
- B) Carbon dioxide
- C) Nitrogen
- D) Hydrogen

Answer: A) Oxygen

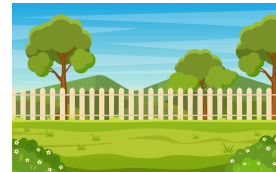


**Q19. Jack planted a seed in his garden. He watered it every day and made sure it got plenty of sunlight. After a few days, a tiny green sprout appeared.**

**Which of the following is NOT something the seed needed to grow?**

- A) Sunlight
- B) Water
- C) Air
- D) Music

Answer: D) Music

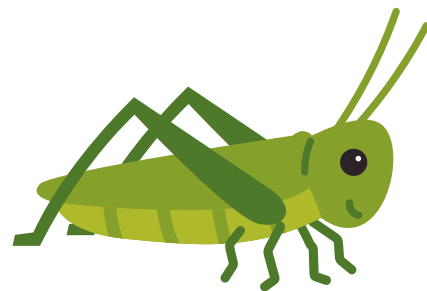


**Q20. In a forest, a grasshopper eats grass. Then a frog eats the grasshopper, and a snake eats the frog.**

**Which of these statements is correct?**

- A) The grasshopper is a producer
- B) The snake is a herbivore
- C) The frog is a carnivore
- D) The grass makes its own food from the soil

Answer: C) The frog is a carnivore



**Q21. Josie found a closed box. He didn't know what was inside, but when he shook it, he heard water splashing.**

**Which state of matter was inside the box?**

- A) Solid
- B) Liquid
- C) Gas
- D) Plasma

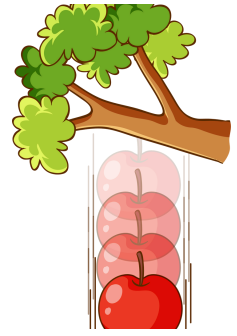
Answer: B) Liquid

**Q22. Zareic was sitting under a tree when an apple fell down and hit the ground.**

**What made the apple fall?**

- A) The wind pushed it
- B) Gravity pulled it toward the ground
- C) The apple decided to jump
- D) The tree shook the apple down

Answer: B) Gravity pulled it toward the ground



**Q23. Our body is like a superhero team where each organ has a special job.**

**Which organ system is responsible for sending messages to different parts of the body?**

- A) Digestive system
- B) Nervous system
- C) Muscular system
- D) Circulatory system

Answer: B) Nervous system

**Q24. Rupel looked into a mirror and saw her face.**

**Why does a mirror show reflections?**

- A) It makes new pictures of us
- B) It absorbs all the light
- C) It bounces back light, creating a reflection
- D) It creates a shadow

Answer: C) It bounces back light, creating a reflection



**Q25. Ben threw a basketball towards the ground, and it bounced back up.**

**Why did the ball bounce?**

- A) The ball had a battery inside
- B) The ball was full of air, which pushed it up
- C) The ground applied force back to the ball
- D) The ball wanted to jump

Answer: C) The ground applied force back to the ball

