



SMETA SPELLATHON OLYMPIAD

SAMPLE PAPER
GRADE 1-2



Q1. Which of the following is spelled correctly?

- A) dog
- B) dawg
- C) dig
- D) dgo

Answer: A) dog

Q2. Which of the following is spelled correctly?

- A) frog
- B) frog
- C) frgo
- D) fog

Answer: A) frog

Q3. She sat down on the ____ near the window, ready to read her book. Which of the following is spelled correctly?

- A) chair
- B) chier
- C) cher
- D) cheir

Answer: A) chair

Q4. The ____ curled up on the couch, enjoying the warmth of the sunlight. It looked so peaceful as it took a nap.:

Which of the following is spelled correctly?

- A) cat
- B) cadt
- C) catte
- D) cet

Answer: A) cat

Q5. Sarah hurt her hnad while playing, but she quickly got up and continued to jump.

Which word is spelled incorrectly in the above sentence?

- A) hand
- B) quickly
- C) jump
- D) hnad

Answer: D) hnad

Q6. Which word is spelled incorrectly?

- A) yellow
- B) ten
- C) pink
- D) saven

Answer: D) saven (Correct spelling: seven)

Q7. Tim decided to snig and then write a letter, but he was so tired he could only talk about it.

Which word is spelled incorrectly in above sentence?

- A) write
- B) talk
- C) sing
- D) snig

Answer: D) snig (Correct spelling: sing)

Q8. Which of the following is spelled incorrectly?

- A) foot
- B) mouh
- C) knee
- D) neck

Answer: B) mouh (Correct spelling: mouth)

Q9. The dog likes to play with a b_ll.

- A) a
- B) o
- C) i
- D) u

Answer: A) a (ball)

Q10. We need to wear warm clothes during w_n_er. Fill in the missing letters and choose correct option.

- A) wenter
- B) winter
- C) wintar
- D) wintor

Answer: B) winter

Q11. I have a new red c_r. I will use that to go to market.

- A) o
- B) a
- C) i
- D) u

Answer: B) a (car)

Q12. She is wearing a blue dr_ss.

- A) e
- B) a
- C) i
- D) u

Answer: A) e (dress)

Q13. Unscramble the word:

IBG

- A) big
- B) bigs
- C) gbi
- D) gib

Answer: A) big

Q14. Unscramble the word:

MALLS

- A) small
- B) slams
- C) smail
- D) mauls

Answer: A) small

Q15. Unscramble the word:

FSRTI

- A) soft
- B) first
- C) forst
- D) ftsor

Answer: B) first

Q16. Mia loves fruits. Her favorite ones are "apple," "banana," and then...?

- A) oringe
- B) orange
- C) ornge
- D) ornage

Correct Answer: B) orange

Q17. Sally is making a tropical drink. She added "pineapple," "mango," and then...?

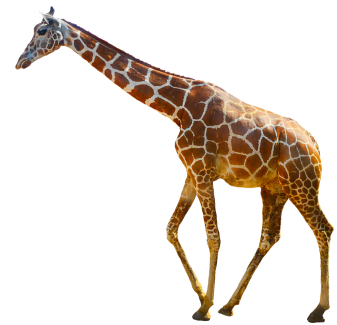
- A) coconut
- B) kokonut
- C) cokonut
- D) cokonat

Correct Answer: A) coconut

Q18. Which word correctly matches the picture?

- A) Giraff
- B) Jirafa
- C) Girrafe
- D) Giraffe

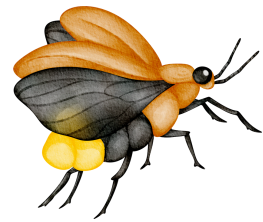
Correct Answer: D) Giraffe



Q19. Which word correctly matches the picture?

- A) Firefli
- B) Firfly
- C) Firefly
- D) Fyrefly

Correct Answer: C) Firefly



Q20. Which word correctly matches the picture?

- A) Plent
- B) Plentt
- C) Plant
- D) Plaant

Correct Answer: C) Plant



Read the passage and answer the questions 21-25.

Lena woke up in the middle of the night to a strange whispering sound. She sat up, listening carefully. It wasn't the wind, and it wasn't the clock ticking. The sound seemed to be coming from her bookshelf! Slowly, she tiptoed toward it, her heart pounding. As she reached out, a book suddenly slipped off the shelf and fell to the floor with a soft thud.

Was someone there? Or was it just her imagination? Lena took a deep breath and picked up the book. The cover glowed faintly under the moonlight. Trembling, she opened it... and the whispering grew louder.

Q21. Which word is spelled incorrectly?

- A. Whispering
- B. Imaginashun
- C. Pounding
- D. Slipped

Answer: B) Imaginashun

Q22. Which word contains a silent letter?

- A. Knock
- B. Pounding
- C. Shelf
- D. Sound

Answer: B) Knock

Q23. Rearrange the letters to form a correct word:

M, A, G, I, N, A, I, O, N, I, T

- A. Imangtaion
- B. Imagntiaon
- C. Imagination
- D. Imanigaton

Answer: c) Imagination

Q24. Which of these words is spelled correctly?

- A. Slippedd
- B. Wisppering
- C. Pounding
- D. Immagination

Answer: C) Pounding

Q25. Complete the word:

The book made a soft t_ _ d as it hit the floor.

- A. o, k
- B. h, u
- C. r, d
- D. p, l

Answer: B) h, u